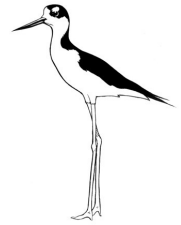
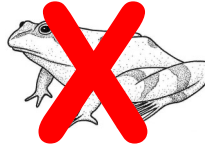


# The Vertebrates



We live with all sorts of animals in California! Scientists like to classify these animals by their similarities. Uh-oh! Some of the classes below got mixed up. Draw an X on the animal that doesn't belong in each class. When you're done, fill in the name of the classes with either **Fish, Amphibians, Reptiles, Birds, or Mammals.**

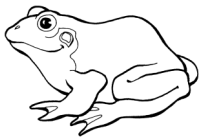
Class 1: **Birds** \_\_\_\_\_



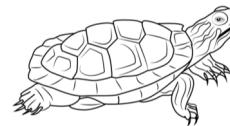
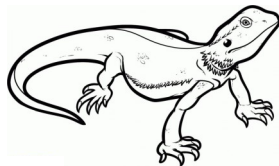
Class 2: **Mammals** \_\_\_\_\_



Class 3: **Amphibian** \_\_\_\_\_



Class 4: **Reptiles** \_\_\_\_\_



Class 5: **Fish** \_\_\_\_\_

