

Digital modules blended with online peer-exchange workshops

Climate + Philanthropy

A compact learning journey



Climate + Philanthropy

A compact learning journey

We know how pressing and yet complex it is to respond to the climate emergency. We also understand how overwhelming it can feel to be faced with different options and strategies to integrate climate into your work.

This Climate + Philanthropy course has been designed to help you better understand the climate crisis and take action.

About this course

No matter your foundation's funding area of interest, it will be impacted by a changing climate and we all have a role to play in response to this.

Active Philanthropy's Climate + Philanthropy short course provides you with a holistic understanding of the climate crisis and how you can best respond to help drive the system-wide change needed to transition to a more sustainable and just future.



8 week course



5 x 1.5 hr peer-exchange workshops (online)



1.5 hr self-paced module per week (online)



Develop your climate action plan

You'll learn how a climate-aligned grantmaking strategy, investment portfolio and operations can create more resilient charitable foundations, benefitting people and the planet. By aligning your giving and investing with climate action, you'll unlock new opportunities for growth and innovation for your foundation, both now and into the future.

"This course is a great resource for foundations across all sectors to learn about working in climate philanthropy. The video interview format allows multiple experts to share experiences of working on climate with you, guiding you through the process of applying a climate lens to the work your foundation is doing."

~ Stephan Chambers

Director, The Marshall Institute at LSE

Get in touch:

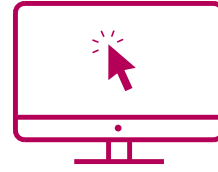
✉ learningjourney@activephilanthropy.org

📍 Active Philanthropy gGmbH
Caroline-von-Humboldt-Weg 8
10117 Berlin
Germany



Climate + Philanthropy

A compact learning journey



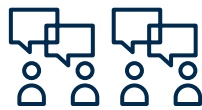
Register for your place
on the course!

learn.activephilanthropy.org

Your learning journey

Over eight weeks, you'll gain foundational knowledge on climate, and explore the current response of the philanthropic sector to the climate crisis. Guided by over 20 industry experts, you'll explore how to begin aligning your grantmaking, operations and investing with climate action, and become a driver for change in your network. By the end of the course, you'll have developed a bespoke climate action plan for taking the next steps to drive climate action in your foundation.

Peer-exchange workshops



You have the exciting opportunity to participate in an additional five live peer-exchange workshops that will run alongside the course. These 1.5-hour-long online peer-exchange workshops will occur every other week of the course. They are facilitated by expert coaches and create a space for you to meet, engage, and exchange ideas with your peers.

www.activephilanthropy.org



www.philea.eu



In expert hands

The online short course is designed by Active Philanthropy and presented in partnership with Philea.

Active Philanthropy supports philanthropists, donor families, philanthropic organizations and social investors who wish to engage in climate action. We offer expertise and expeditions to learn about the climate crisis, as well as opportunities and grant services for effective climate philanthropy. As a non-profit organization, Active Philanthropy is non-partisan and independent from governments, financial institutions and NGOs. We are funded by donations and grants from individuals and non-state organizations as well as service fees.

Philanthropy Europe Association (Philea) nurtures a diverse and inclusive ecosystem of foundations, philanthropic organisations and networks in over 30 countries that work for the common good. We unite over 10,000 public-benefit foundations that seek to improve life for people and communities in Europe and around the world. We are the voice of European philanthropy. Our purpose is to harness its immense multidimensional potential – including when it comes to fighting the climate crisis.



**Active
Philanthropy**

Philea

Philanthropy
Europe
Association

Climate + Philanthropy

A compact learning journey

How you'll learn

This is an online course comprising eight core modules, one module released each week for eight weeks. These modules are asynchronous (i.e. you can move through the module content on your own) each week. Throughout this learning journey, you'll enjoy a range of stimulating materials including case studies, video interviews with expert speakers, engaging visuals and interactive content. You'll also be able to connect with other participants, sharing your insights and experiences on discussion forums throughout the weeks.

Your learning will result in a climate action plan that combines the skills and knowledge you have gained throughout the course. It equips you to take the next steps in your workplace.

There is also the option to participate in five 1.5-hour-long online peer-exchange workshops, these are live and synchronous (i.e. involving groups where participants come together as a cohort for live online workshops. These groups will stay the same throughout the course). The peer-exchange workshops are facilitated by expert coaches and give you the chance to build deeper relationships and work closely with others who are taking the course.

"Responding to climate change is not something anyone can do alone. Through this course you'll engage with a supportive community of philanthropy peers to support and encourage you on your climate journey."

~ Asad Rehman,

Executive Director, War on Want



What you'll learn

Getting Started



Our course convenor, Sandrine Dixson-Declève will welcome you to the course, get familiar with the

course platform, hear from some guest speakers, and begin connecting with fellow participants.

Module 1: How did we get here?



Discover the causes of climate change, and the key physical, social and psychological factors that are fuelling the crisis.

- Understand that the drivers of climate change are not only physical but also social and psychological.

- Recognise that we are rapidly, and potentially irreversibly, destabilising natural systems that have taken hundreds of thousands of years to form.
- Describe the broader environmental crisis beyond climate change.

Module 2: What impacts are we seeing today?



Understand the physical impacts of warming, the tipping points in the climate system, and the injustice related to the worst effects being felt by those in developing countries.

- Recognise the main impacts of climate change.
- Understand the interconnectedness of the environmental changes we are experiencing.

- Describe what we mean by 'runaway climate change' (i.e. tipping points, non-linear change and irreversibility).
- Explain why climate is a social justice issue.

Module 3: What's being done about it?



Examine the current climate action happening at different levels: From the international stage, to national governments, businesses, civil society, and the philanthropic sector.

- Explain the key outcome of the Paris Agreement and why we need to aim for 1.5°C of warming.
- Differentiate the levels at which climate action can happen.

- Identify several positive trends that are already underway.
- Discuss some of the current climate action in the philanthropy sector.
- Explain the critical role philanthropy can play in accelerating climate action.

Module 4:
Decarbonising operations and intersectional funding opportunities



Explore how to decarbonise operations, and examine how pioneering foundations are driving change to respond to the needs of a world vulnerable to the climate emergency while delivering on their foundation's mission.

- Recognise that there are a variety of ways to begin aligning your giving strategy with climate.
- Understand the key steps to decarbonising physical operations.
- Analyse the intersections between climate impacts and different areas of philanthropy.
- Articulate the opportunity areas that align with your foundation's purpose.

Module 5:
Creating a climate-aligned grantmaking strategy - Scoping out the journey ahead



Discover the journey that foundations need to take to create a climate-aligned grantmaking strategy.

- Recognise the various actions and strategies needed for societal change to happen.
- Articulate the need for new narratives in the climate movement.
- Assess which key steps your foundation can take to update or build a climate-aligned grantmaking strategy.
- Determine where your foundation could best fit into the wider ecosystem of climate funders.

Module 6:
Creating a climate-aligned grantmaking strategy - Finding your role to play



Identify the role that your foundation can play in working to tackle the climate crisis.

- Identify actors already working in the climate space that you can learn from.
- Articulate the assets and expertise your foundation currently has.
- Outline the significant levers and opportunities for change that your foundation can leverage.
- Recognise the need to fund with a long-term vision in mind.
- Discuss the key steps your foundation can implement to update or build a climate-aligned grantmaking strategy.

Module 7:
Responsible investments



Reimagine how a foundation's endowment portfolio can be invested for the benefit of the planet.

- Understand the kinds of assets a typical endowment is invested in.
- Describe how responsible investing helps your foundation align its endowment with broader social aims.
- Select the relevant steps to update your foundation's investment strategy.

Module 8:
Leading wider change



Discover the wider impact your foundation can have as well as the role that you personally can play in leading the change needed.

- Recognise support networks that can help accelerate your work.
- Formulate a personal action plan to help your organisation embed climate considerations into its work.

Climate + Philanthropy

A compact learning journey

This course is for you if you want:



Increased confidence on the topic



A clear idea of the next steps to take to integrate climate into your work



A climate-positive endowment



A deeper understanding of how to support projects that will shift the political dial



Meaningful connections with a community of like-minded peers

Who should take this course?

This course is for everyone who wants to take an active role in integrating climate change into their foundation's work. No prior knowledge in sustainability or climate is needed. If you have some prior experience in these topics you'll be able to build on what you already know while gaining new insights into the relationship between climate change and philanthropy.

"Understanding the basics of climate science is critical for finding solutions. This course will equip you with that knowledge, empowering you to become a more effective change agent."

~ Mark Maslin

Professor of Earth System Science at University College London

Who you'll learn from



Sandrine Dixson-Declève is an international and European climate, energy, sustainable development, sustainable finance, complex systems thought leader. She is currently the Co-President of the Club of Rome and divides her time between lecturing, facilitating difficult conversations and advisory work. In her recent TED talk, she shares what we've learned in the 50 years since the publication of the "Limits to Growth" report, and discusses the launch of Earth4All. Sandrine recently published "Quel Monde Pour Demain" lucp ire editions and was recognised by GreenBiz as one of the 30 most influential women across the globe driving change in the low carbon economy and promoting green business.

Climate + Philanthropy

A compact learning journey



Start your climate learning journey:

1. Find the next course start date
2. See if any colleagues would like to join and make the most of our group discounts
3. Book your seat online

learn.activephilanthropy.org

Expert speakers



Alison Tickell

Founder and CEO, Julie's Bicycle



Danielle Walker Palmour

Foundation Director, Friends Provident Foundation



Asad Rehman

Executive Director, War on Want



Dominic Burke

Investment Director, Lankelly Chase



Dame Caroline Mason

CEO, Esmée Fairbairn Foundation



Eva Rehse

Executive Director, Global Greengrants Fund, UK



Cassie Robinson

Our Collective Imaginations and Philanthropy Consultant



Felicitas von Peter

Founder and Managing Partner, Active Philanthropy



Daniel Hale

Campaign Director, Purpose Climate Lab



Felicity Mallam

Director, Wates Family Charities

Climate + Philanthropy

A compact learning journey

Expert speakers



Jo Swinson

Director, Partners for a New Economy



Johannes Lundershausen

Climate Knowledge Lead,
Active Philanthropy



Jon Cracknell

Founder, The Hour is Late



Leslie Johnston

CEO, Laudes Foundation



Lily Tomson

Head of Networks,
ShareAction



Mark Maslin

Professor of Earth System
Science at University College
London



Nicky Hawkins

Director of Communications,
On Road Media



Romy Krämer

Managing Director,
Guerrilla Foundation



Sonia Medina

Executive Director, Climate,
Children's Investment Fund
Foundation



Sophie Marple

Co-founder and trustee,
Gower Street



Stephan Chambers,

Director, The Marshall
Institute at LSE