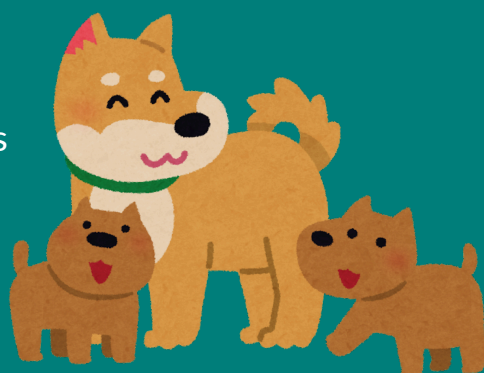


# HOW DO OUR PETS SHOW THEIR LOVE!

## Dogs

- **Tail Wagging & Excited Greetings:** Especially when you return home—they're genuinely thrilled to see you.
- **Following You Around:** Dogs are pack animals and stay close to those they trust and love.
- **Leaning on You or Sitting in Your Lap:** Physical closeness is a strong signal of affection.
- **Licking (Kisses):** Often a sign of affection, grooming, or seeking attention.
- **Bringing You Toys:** A way of sharing something they enjoy with you—like a gift.
- **Eye Contact with Soft Eyes:** Dogs use eye contact to bond, especially when they gaze at you calmly.



## Cats



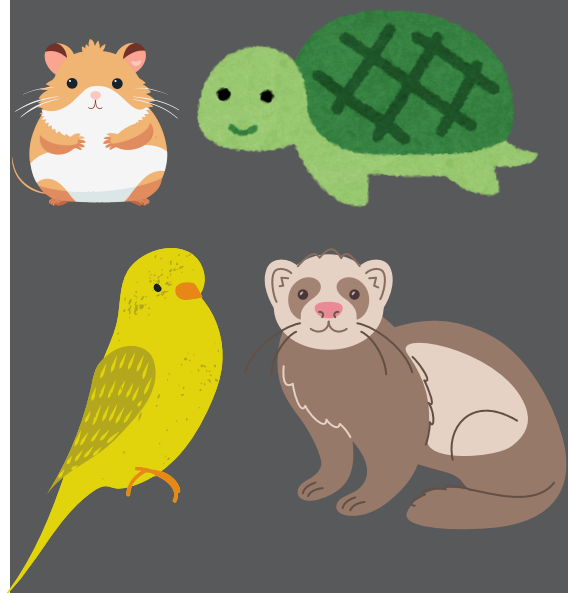
- **Slow Blinks:** This is the feline version of a kiss—slow blinking back is a great way to return the love.
- **Headbutts & Cheek Rubbing:** Cats have scent glands on their heads and faces, and they mark you as “theirs.”
- **Purring:** While not always a sign of happiness, when a cat purrs near you in a relaxed state, it's a strong sign of affection.
- **Kneading ("Making Biscuits"):** A leftover kitten behavior that shows comfort and trust.
- **Sleeping Near or On You:** Vulnerable animals only sleep near those they feel safe with.

## Rabbits

- **Nudging or Bumping You Gently:** Their way of asking for attention or showing affection.
- **Lying Down Next to You:** A relaxed, stretched-out rabbit near you is a major sign of trust.
- **Licking or Grooming You:** Rabbits groom loved ones—if they do this to you, it means they see you as part of their group.



## Other Pets



- **Hamsters/Gerbils:** May show affection by climbing onto you, being calm in your hand, or seeking your presence.
- **Turtles:** Might follow your movement or come to the side of the tank when they see you.
- **Fish:** Some fish recognize their humans and come to the front of the tank or follow your finger.
- **Birds:** Preening you or your hair, mimicking your voice, sitting on your shoulder or following you around

## Just Remember

Just like people, our pets may express their feelings and affections in different ways and in ways that feel comfortable and safe for them - which may look different from this list. Even if a pet isn't overly cuddly or affectionate, their behavior often reveals deep trust and affection in subtler ways. Respect your pet's boundaries and let them build trust to continue to show their love for you.