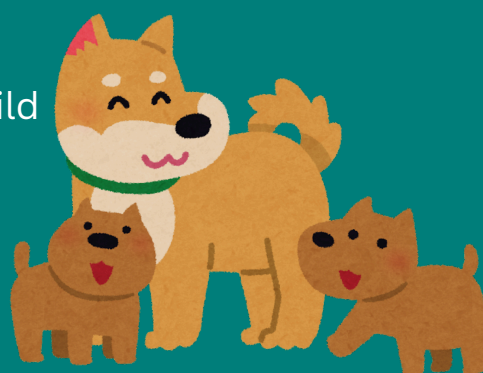


HOW TO SHOW PETS WE LOVE THEM!

Dogs

- **Slow, Gentle Petting:** Most dogs enjoy being petted on the chest, behind the ears, or along the back—avoid sudden touches on the tail or paws.
- **Playtime:** Engaging with toys, or interactive toys build bonds and communicate joy.
- **Verbal Praise:** A happy higher pitched tone, calling their name, and praising them makes dogs feel included and valued.
- **Walks & Exploration:** Letting them sniff and explore during walks shows respect for their instincts.
- **Training Together:** Positive reinforcement training keeps them mentally engaged and close to you emotionally.



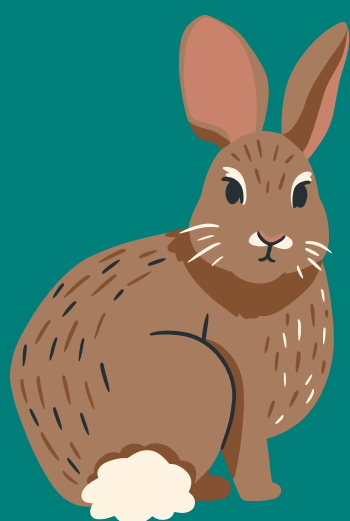
Cats



- **Slow Blinks:** Slowly blinking at a cat is a known feline sign of trust and affection.
- **Petting Spots:** Most cats love gentle strokes on the cheeks, under the chin, or along the spine (but not always the belly).
- **Let Them Come to You:** Cats show affection on their own terms. Respect their space.
- **Play with Toys:** Wand toys, lasers, or small prey-like toys give them joy and build connection.
- **Grooming or Brushing:** Many cats love being brushed—it mimics mutual grooming among feline friends.

Rabbits

- **Head Rubs:** Gently rubbing the top of their heads or behind their ears mimics bonding behaviors.
- **Sit Quietly Nearby:** Rabbits are prey animals and appreciate calm companionship.
- **Floor Time:** Letting them roam safely and engage with you at their level helps them feel comfortable.



Other Pets



- **Proper Habitat:** A clean, enriching environment is a major form of love for animals less social.
- **Routine and Respect:** Handling gently (when appropriate), feeding consistently, and avoiding stressors matters most.

Just Remember

Showing pets affection in ways they interpret as loving means tuning in to their species-specific and individual preferences. Our pets are also individuals, and just like with humans, may prefer different ways of showing love and affection. Pay attention to your pet's body language and be slow and gentle when introducing new methods to show affection to see if they are responsive.